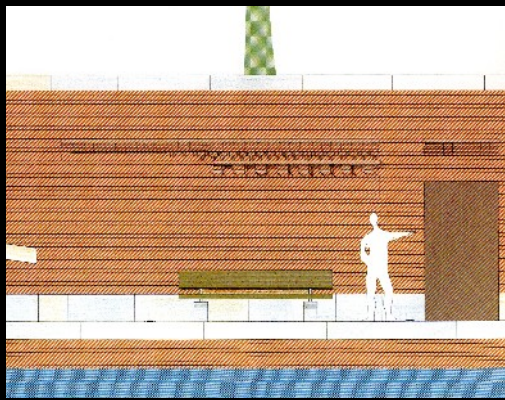
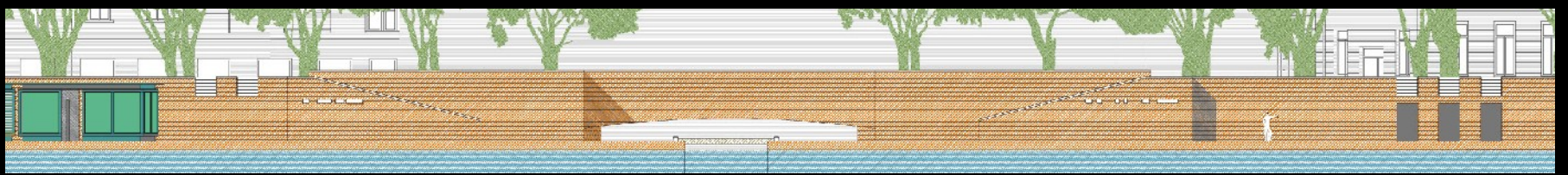
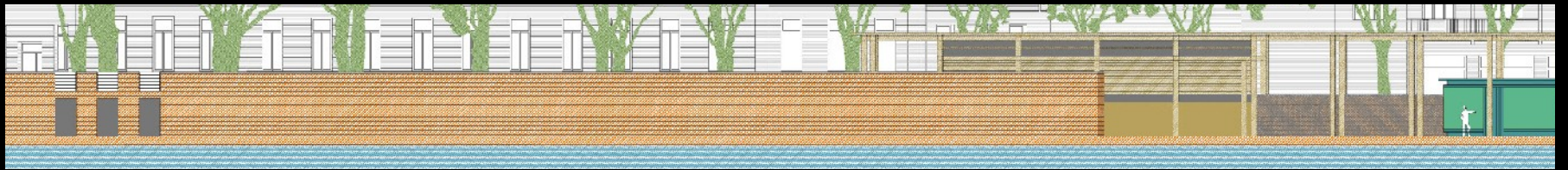
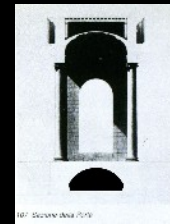
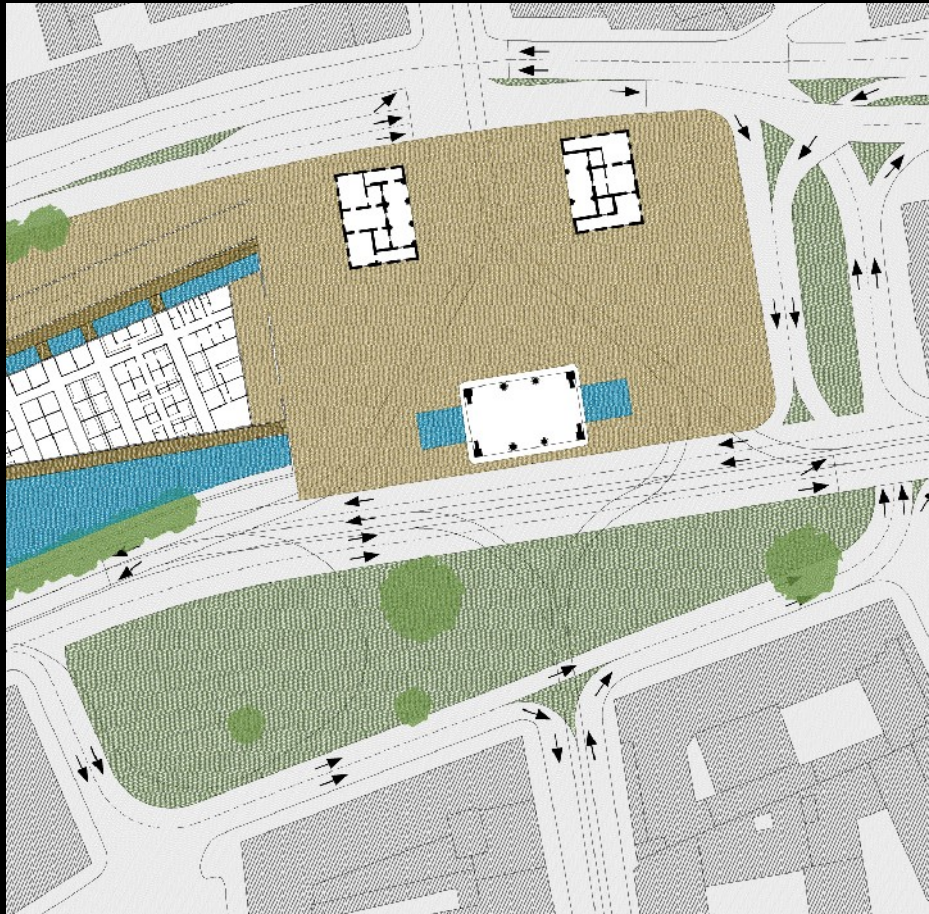
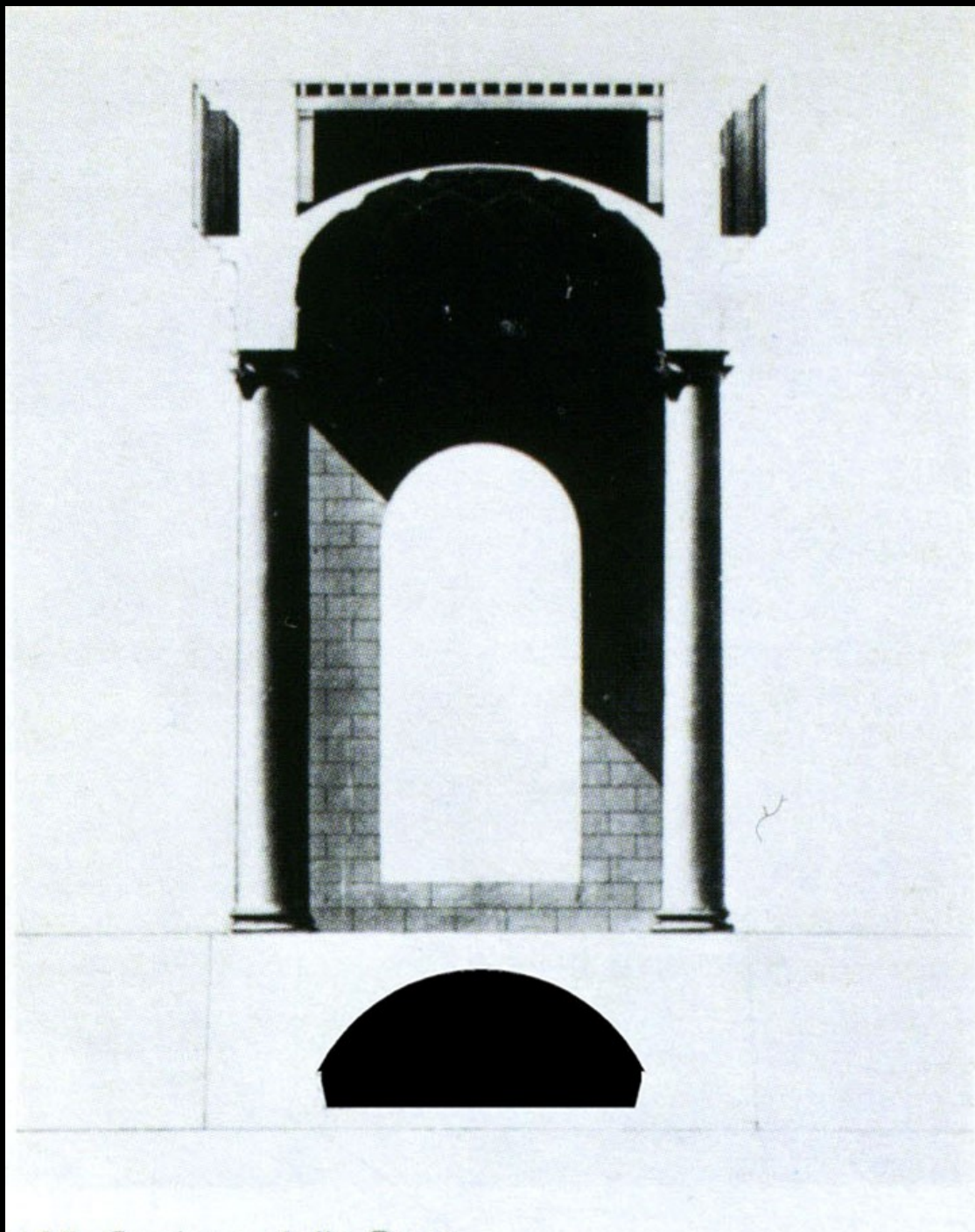


PLANIMETRIA Progetto planivolumetrico, connessioni con le funzioni e spazi pubblici limitrofi scala 1/2000

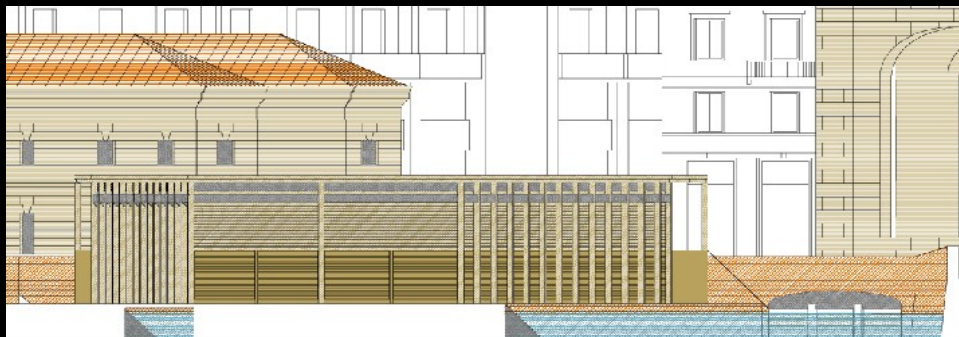
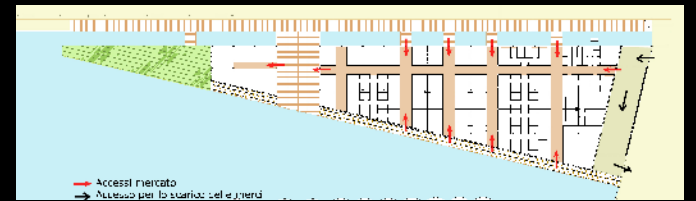
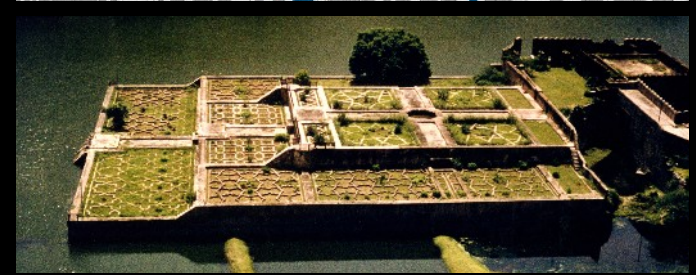
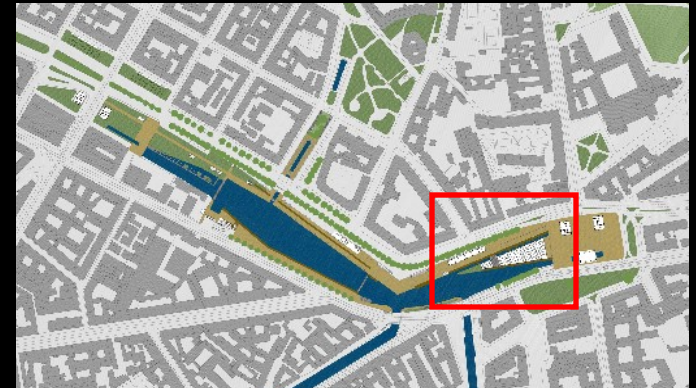
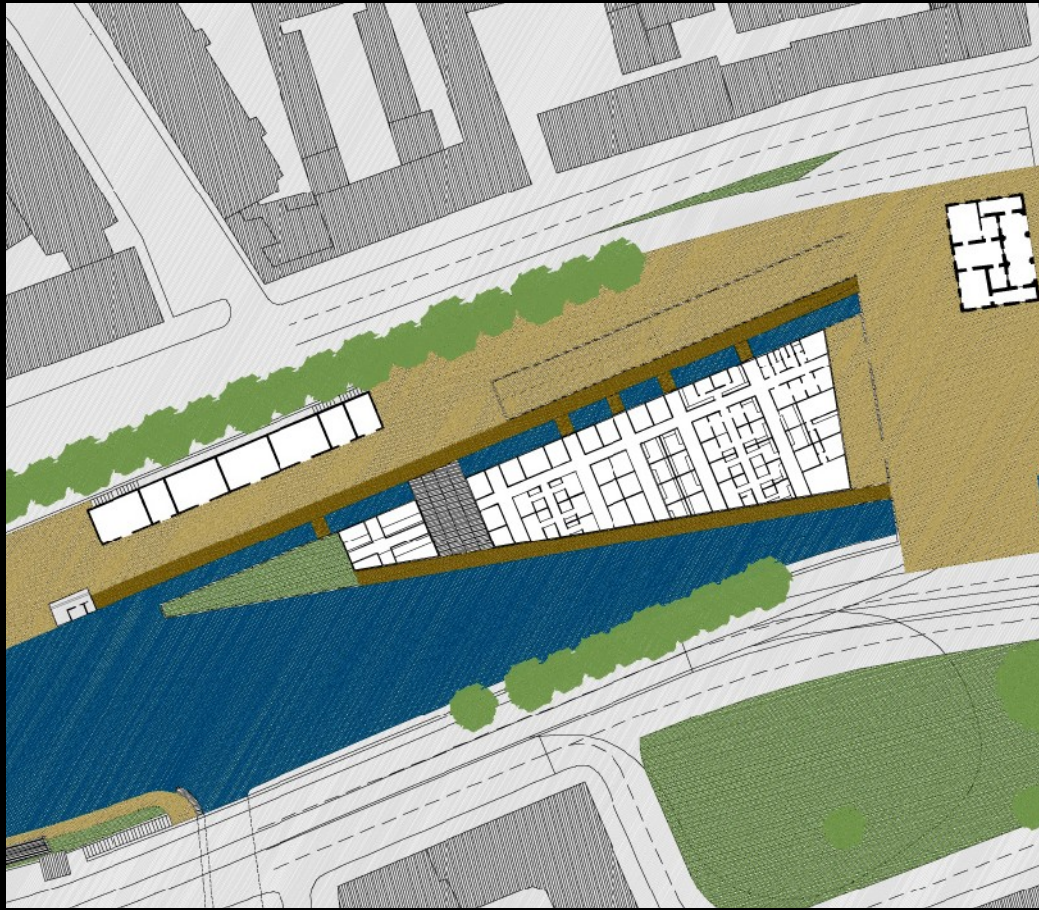


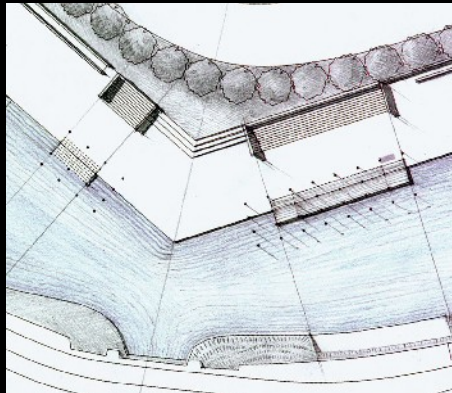
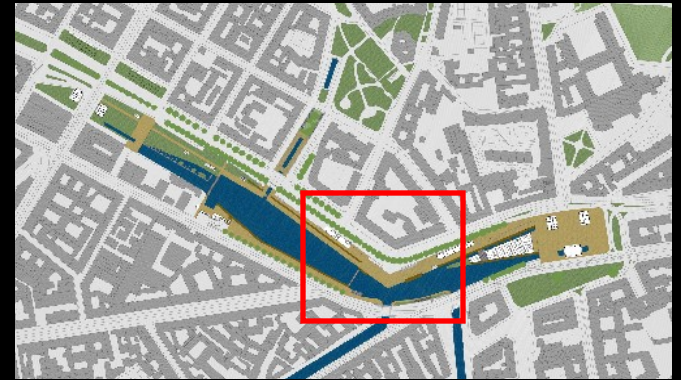
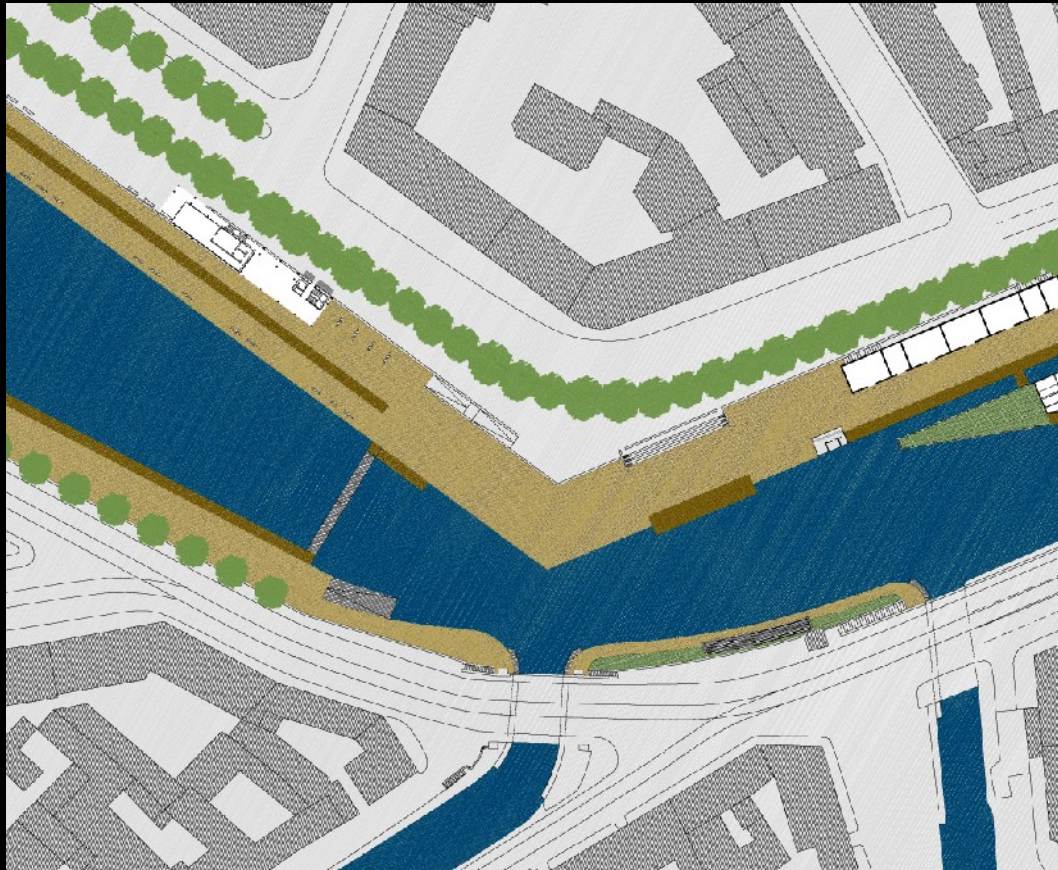


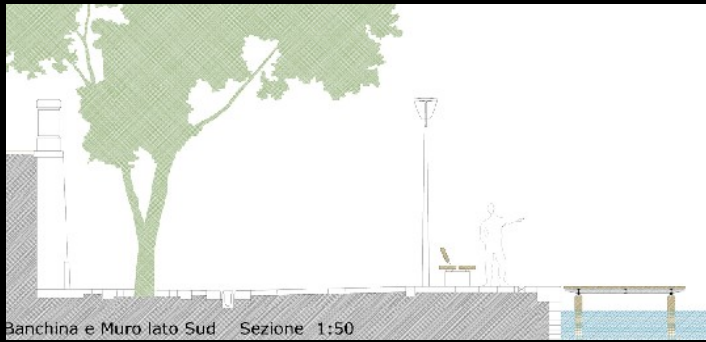
PROSPETTO e SEZIONE della Darsena verso viale Gorizia scala 1/200



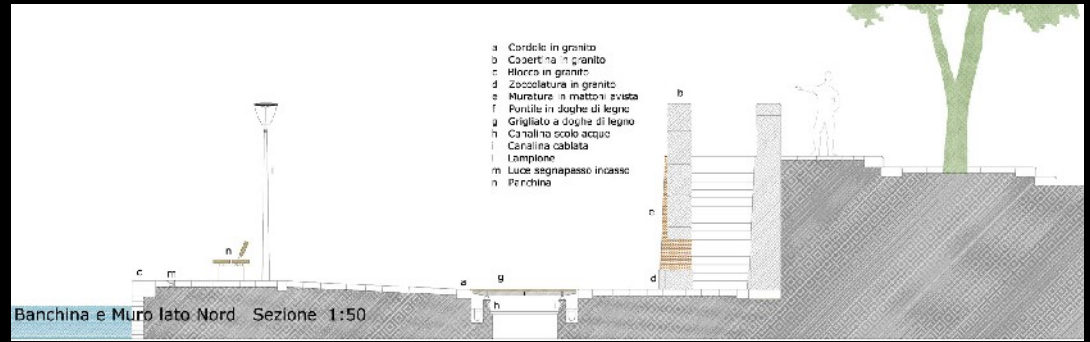




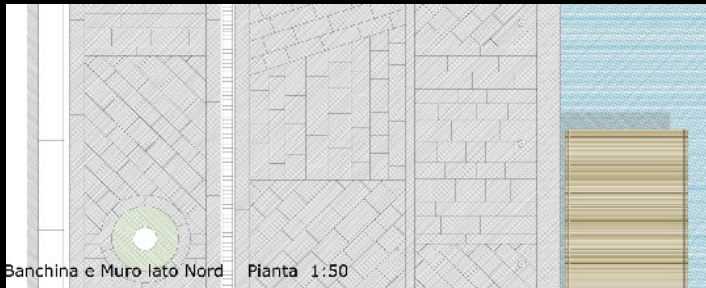




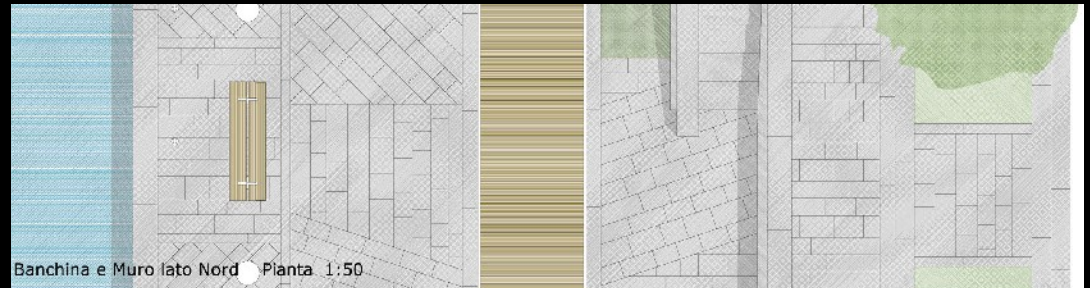
Banchina e Muro lato Sud Sezione 1:50



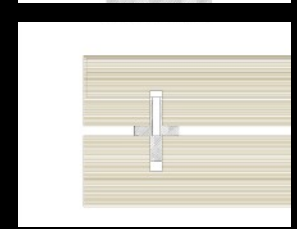
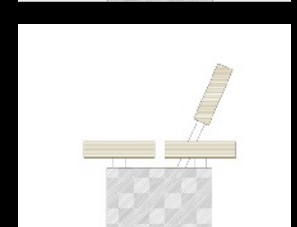
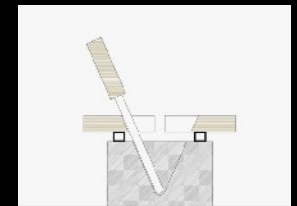
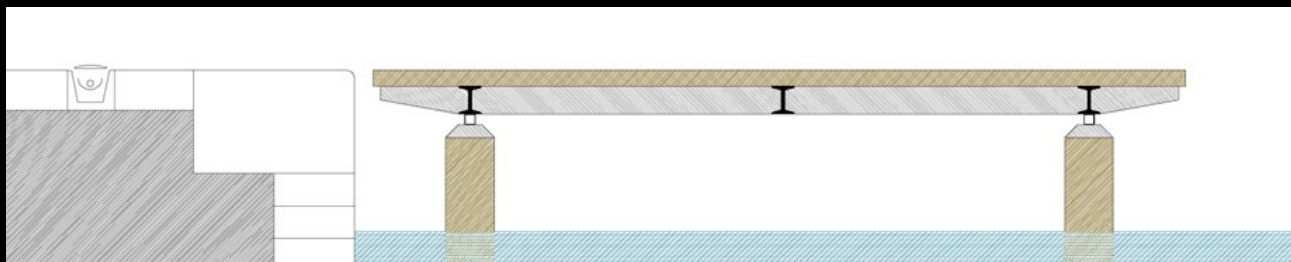
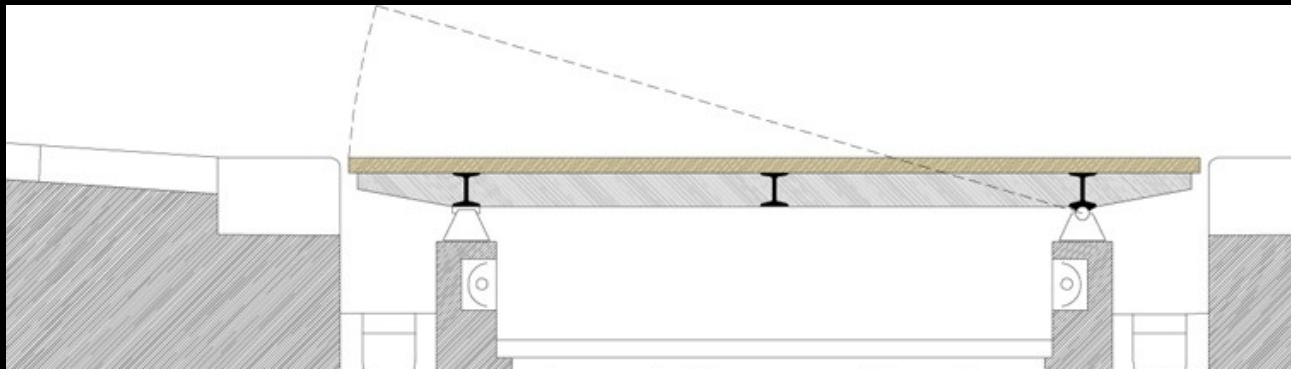
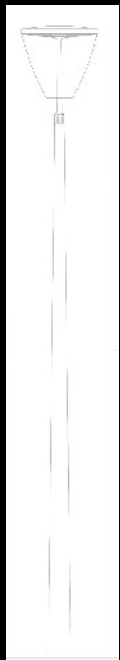
Banchina e Muro lato Nord Sezione 1:50

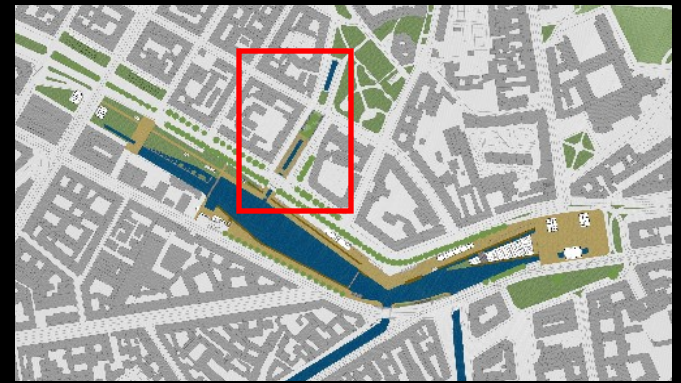
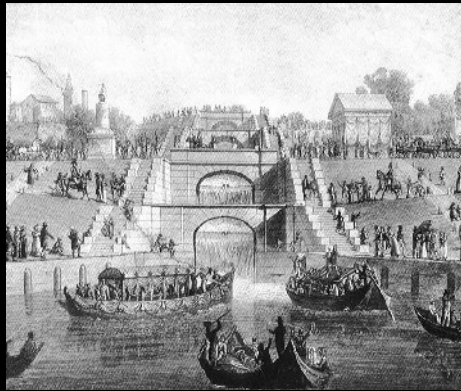


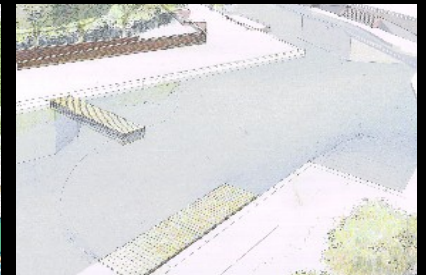
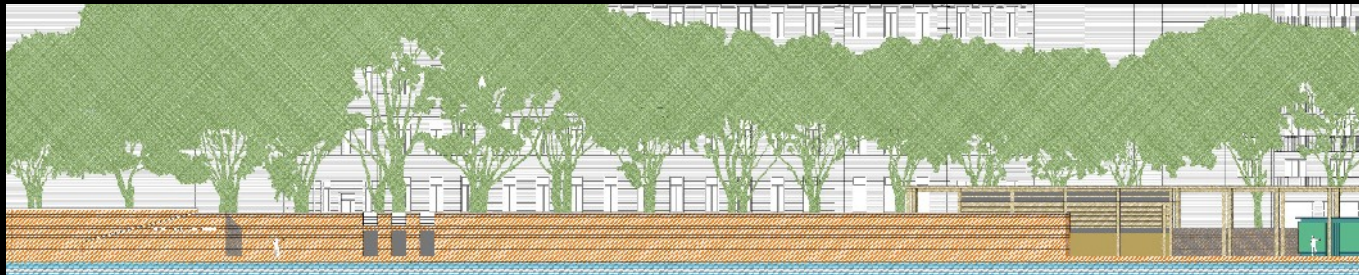
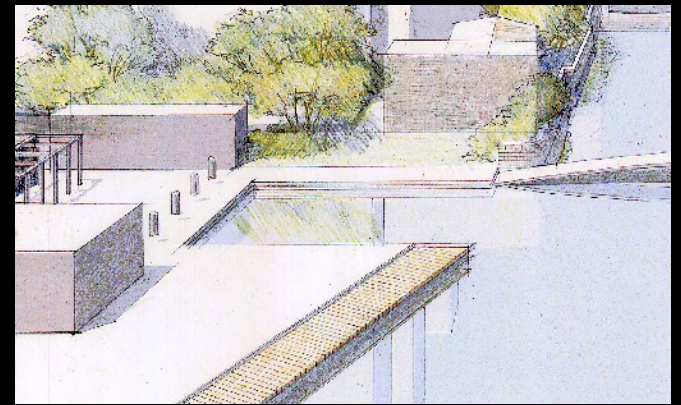
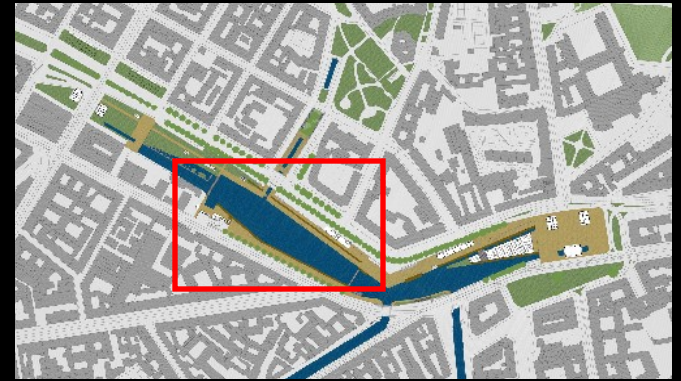
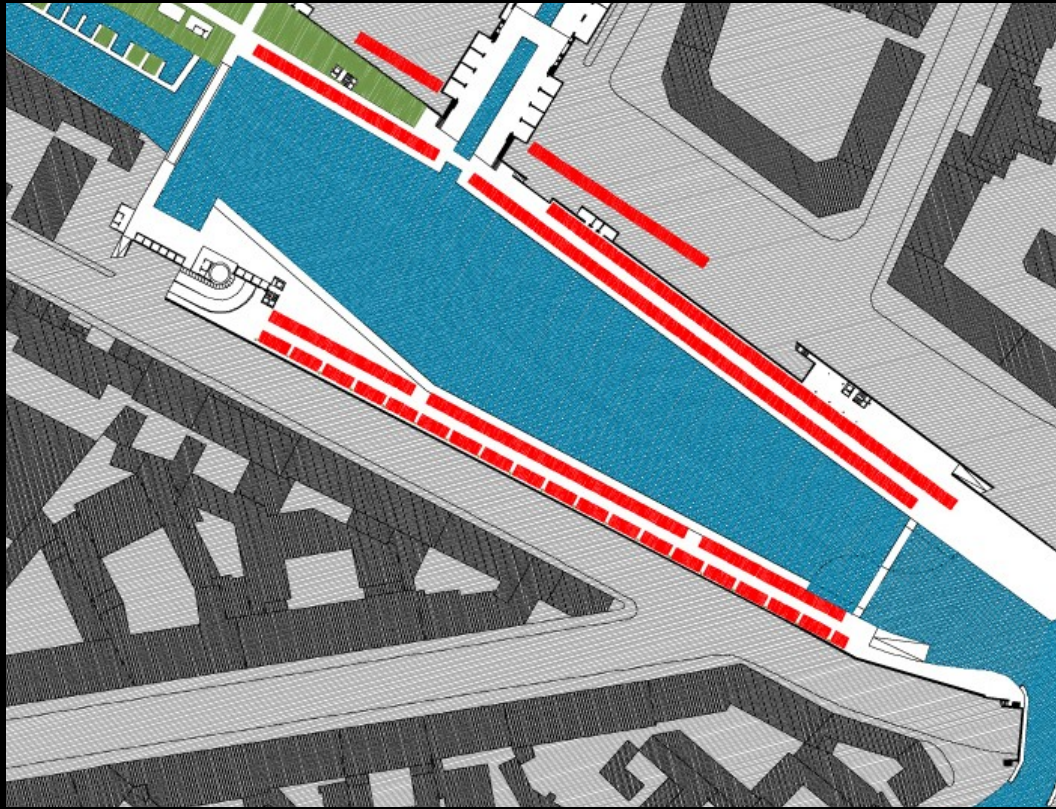
Banchina e Muro lato Nord Pianta 1:50

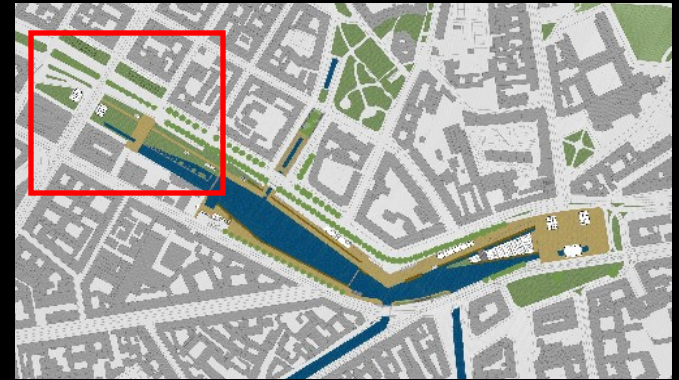


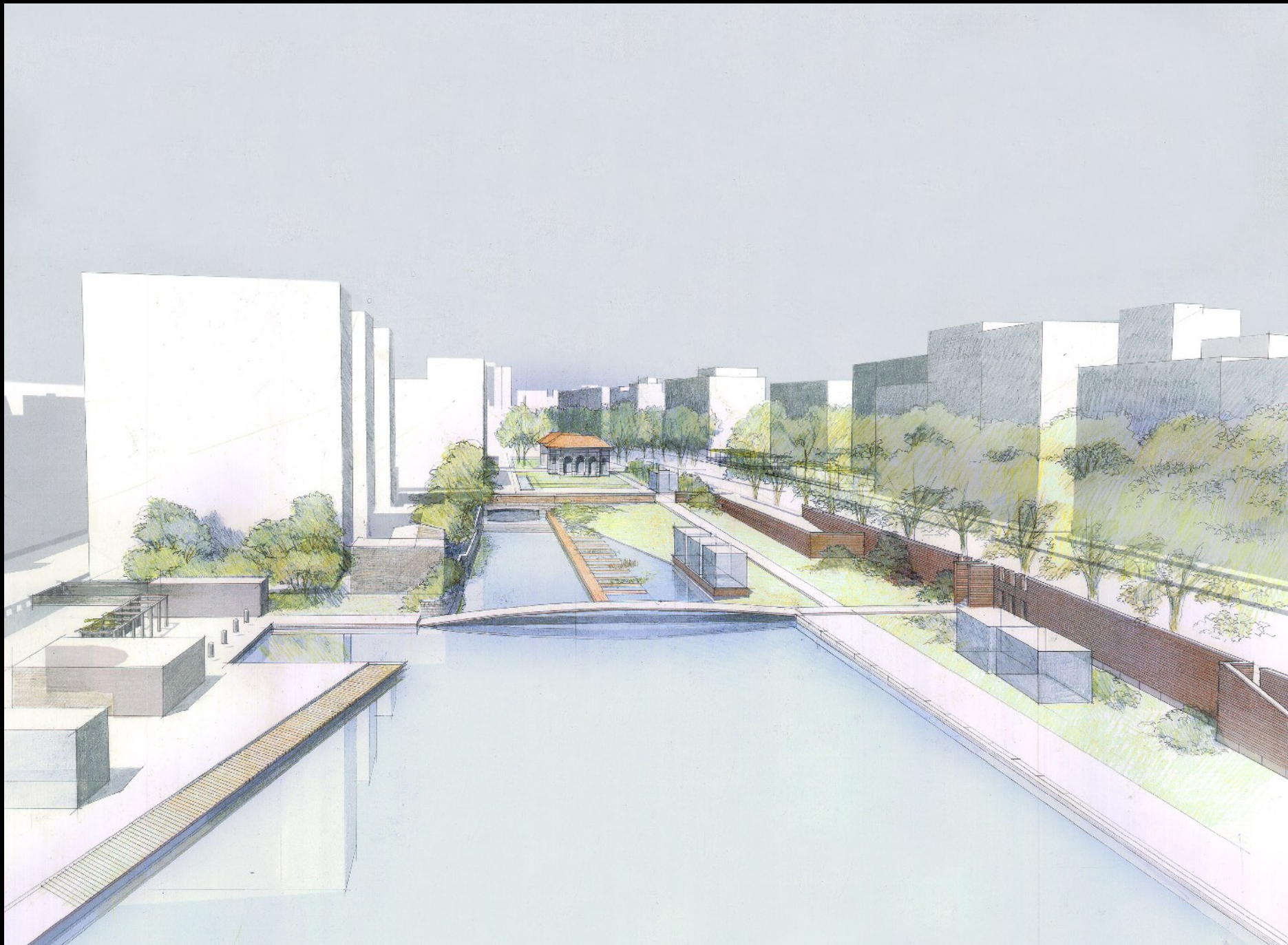
Banchina e Muro lato Nord Pianta 1:50

















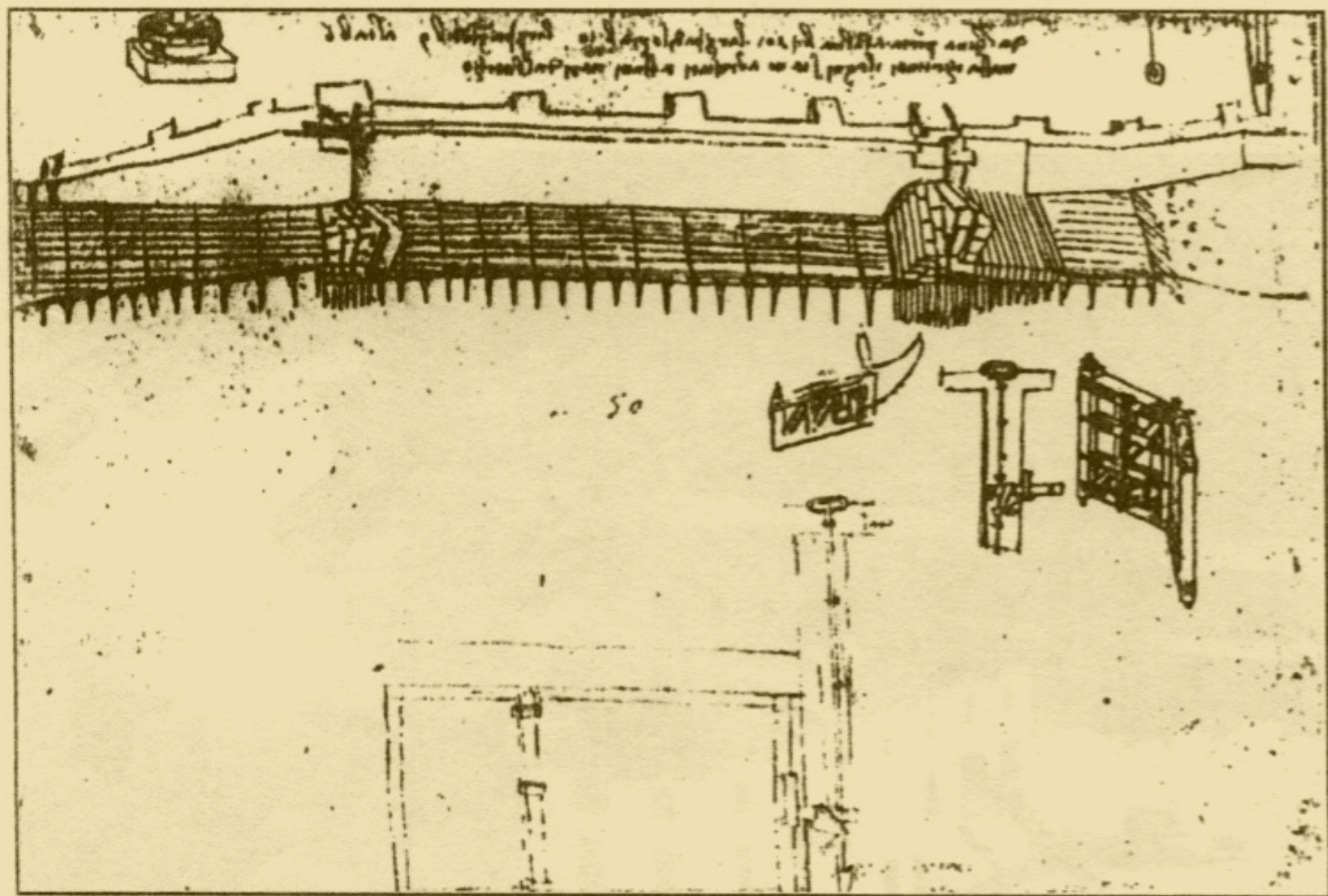


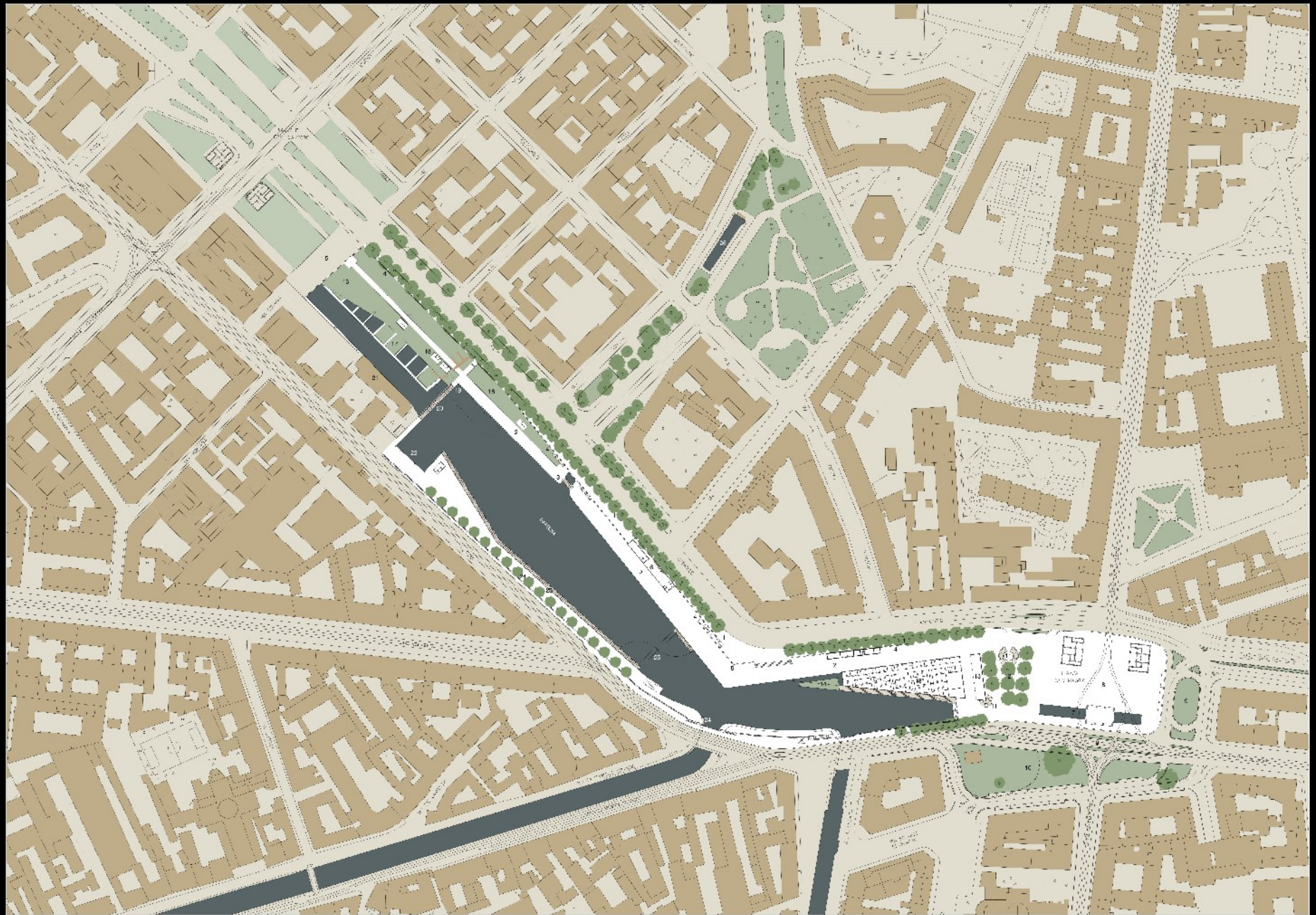
Fig. 3. Leonardo da Vinci, Codice Atlantico, f. 341 v-b, 1488 ca. Leonardo raffigura l'area della Darsena con le mura della città della viscontea, la "concha reggia" e il cam.













Edicola segnalatica

Portile per protezione ed ispezione del sotto-ponte

Sponda inclinata

Pontili per attracco barche elettriche e canoe

Resti mura visibili?

Assito sottostante anche non visibile

Sponda rivestita in legno

Limite visibile sponda 800

Attacco di prua barche Scari

Gru per allaggio

Nuovo raccordo a Cenca